

ASC ASEPTIC - CONTAINER

Bottom and outlet recess designed in one piece
Deep-drawn bottom is cone-shaped 12°; 30°; 45°
Improved outlet for better flow
Guaranteed complete emptying, residue free
Extremely easy to use and clean
Environmentally friendly
Vacuum resistant (0,15 bar to optional 0,5 bar)
Designed for aseptic/sterile use



ASEPTIC CONTAINER FOR LIQUIDS AND HIGHLY VISCOUS PRODUCTS

COMPLETE EMPTYING

ASC Aseptic Container features ideal cleaning geometry, residue-free emptying, and is non-permeable. With great variety in sizes and non-wearing construction which allows continual re-use, the aseptic container ASC made of stainless steel meets all your requirements.

Our striving for quality and perfection ensures the highest possible degree of safety and lifespan. Your requirements and our pioneer culture give rise to customized, innovative products made of stainless steel.

PRODUCT APPLICATIONS

- Dairy products
- Fruit and vegetables juices, puree and preparation
- Liquid eggs
- Flavours Frequances and Aroms
- Liquid Herbs and Spices
- Pharmaceutical Serums

GENERAL DATA

CYLINDRICAL CONTAINER FOR ASEPTIC USAGE

TYPE	TANK DIAMETER	VOLUME	FEATURES
ASC 550	550 mm	150 to 300 L	<ul style="list-style-type: none"> • Container made of stainless steel • Surface Quality 3C / 2B • Bath-pickled and passivated • Gasket are made of Silicone • Butterfly Outletvalves • Feet with plastic pads for floor protection • All connections can be sealed
ASC 600	600 mm	200 to 350 L	
ASC 700	700 mm	250 to 450 L	
ASC 800	800 mm	350 to 600 L	
ASC 1000	1000 mm	400 to 1250 L	
ASC 1070	1070 mm	500 to 1250 L	
ASC 1140	1140 mm	750 to 1600 L	

BOTTOM OPTIONS



12°

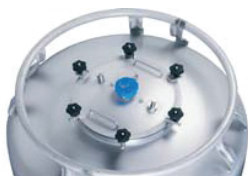


30°



45°

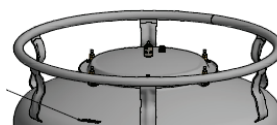
TOP OPTIONS



SCREW-LID

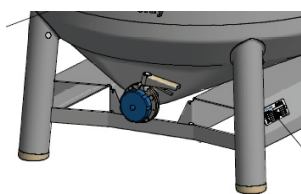


BAJONET-CLOSURE LID

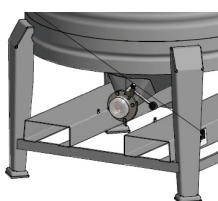


US-SCREW LID

PALLET OPTIONS



TUBULAR LEG PALLET DESIGN



PROFIL LEG PALLET DESIGN

- Suitable for forklift and hand pallet truck handling.
- Stackable

ADVANTAGES

- Circumferential stacking ring allows stacking 3 high.
 - Safe forklift transport (fork tunnels)
 - Complete emptying of container due to steep bottom with hardly any dead space or zones, fitted with outlet pocket and directly flange-mounted butterfly valve
 - Weight optimized frame composed of tubular profile
 - Stainless steel options: AISI 304 or AISI 316.
- * Optionally available with heating or cooling jacket.