

CONTAINERS FOR THE BEVERAGE INDUSTRY



STAINLESS STEEL KEGS, RUBBER-STEEL-RUBBER KEGS, STAINLESS STEEL CASKS,
PRESSURE VESSELS, ASEPTIC IBC CONTAINERS, SERVICE AND REPAIRS, TRACKING SOLUTIONS.

WELCOME

ABOUT US

THIELMANN is the Containers Business Activity from the HERITAGE^B Group. By merging our brands to a greater whole, we are becoming THIELMANN, thereby expressing our commitment to continuously deliver highest quality standards, efficiency, speed and global presence.

- 08 STAINLESS STEEL BEVERAGE KEGS
- 10 RSR (RUBBER-STEEL-RUBBER) KEGS
- 11 STAINLESS STEEL CASKS
- 12 PRESSURE VESSELS
- 13 ASEPTIC CONTAINERS
- 14 MAINTENANCE AND REPAIR SERVICE
- 15 TRACKING AND IDENTIFICATION SERVICE



THIELMANN: ONE BRAND TO MEET ALL YOUR EXPECTATIONS

Our commitment and continuous effort to deliver the best container quality and service has, over many years, built us an excellent know-how reputation with our various customers around the world. As a result, our brands UCON, COMET, PORTINOX, THIELMANN and WEW have covered most of the container market and occupied leading positions in many industry segments.

Experience has taught us to never stand still and to adapt with flexibility and openness to market changes. That is why today, in an effort to continuously fulfill customer requirements, we have decided to merge our different brands under one brand: **THIELMANN**.

In bringing together our knowledge and strength under one roof we provide customers with the most in-depth container expertise they can find.

From now on you, as our esteemed customer, can benefit from THIELMANN as a one-stop shop:

One single point of contact for all your container needs! This ambition and the unification of our different brands are reflected in our slogan: THIELMANN - The Container Company as well as our new brand identity.

Under our new brand identity we live our dedication to our customer's performance, our responsibility as an industry leader and our flexibility to respond to our customer's needs. Together with our engineering knowledge and our uncompromising quality we shall deliver the same excellent products and services to create value for our customers and meet our promise to them:

Customers can trust us to deliver the best expertise in containers.



OUR BRAND VALUES: WHAT IS TRULY IMPORTANT TO US AS AN ORGANIZATION.

Those brand values are the underpinning of our company culture and truly affect the way we think and act at THIELMANN.

DEDICATION:

We are dedicated to our customer's performance and passionate to solve any container challenge.

RESPONSIBILITY:

We take responsibility to do business in a way that secures the future of our company while providing durability and the highest levels of safety over time.

FLEXIBILITY:

We always think and act proactively with our customers in mind and respond to their needs with the highest possible level of flexibility.



OUR BRAND PROMISE: EXPERTISE YOU CAN TRUST.

As the world's leading manufacturer of stainless steel containers THIELMANN delivers the best container expertise customers can trust. The profound knowledge of 275 years of container experience combined with extremely broad industry know-how is what makes us unique.

We embrace our responsibility toward the environment and our stakeholders, respond to their needs with the greatest flexibility possible, and are fully dedicated to providing our customers with exactly the right container solution.



THIELMANN IN THE BEVERAGE INDUSTRY

DID YOU KNOW THAT YOUR FAVOURITE BEER PROBABLY REACHED YOU IN A THIELMANN CONTAINER?

ASSURANCE AND PEACE OF MIND WITH THE MOST HYGIENIC AND ROBUST SOLUTION FOR TRANSPORTING AND PRESERVING BEVERAGES.



TOP-QUALITY THIELMANN
CONTAINERS AND KEGS MADE OF
HIGH-GRADE STAINLESS STEEL
FOR DEMANDING BRANDS.

THIELMANN serves a large variety of customer industries around the world with the most complete range of stainless steel containers.

The guarantees offered by top-quality, high-grade stainless steel for your industry's beverages give you the best possible distribution solution: hygienic, reliable, safe and 100% recyclable.

This storage and transport solution is made from a material which does not react with any kind of beverage, irrespective of temperature and internal or external conditions, meaning that it maintains the organoleptic properties unaltered.

THIELMANN is an expert on the subject. Because we are market leaders in the manufacture of stainless steel beverage containers and kegs, we have the know-how and the highest quality product to ensure unbeatable standards of hygiene, protection, and assurance.

TAKE YOUR BEVERAGES TO
ANOTHER LEVEL. KEEP THEIR
QUALITY INTACT WITH THIELMANN.

All our products for the beverage industry are manufactured from high-grade austenitic stainless steel.

Because it protects the beverage completely from UV light, pollution particles and corrosion, providing a service life of more than 30 years. Because the resistance of stainless steel and all the safety measurements inside our kegs protects your workers from possible explosions.

And because you can choose the format which best suits your needs: from all stainless steel kegs, kegs with rubber chimes, also known in the industry as RSR (rubber-steel-rubber) kegs, to our new lightweight solutions, all of which can be customised.

In any case, we would like to assure you that when you rely on THIELMANN, you are relying on a global engineering team, receiving a solution with a geometrically perfect design and, most important of all, we are ready to adapt to your specific needs.

STAINLESS STEEL BEVERAGE KEGS

A KEG WORTHY OF YOUR BEVERAGE



APPLICATIONS

- BEER
- WINE
- SOFT DRINKS
- CIDER
- JUICE
- WATER

ALL SIZES AND FORMATS

Our portfolio covers all international standards (EURO, DIN, SLIM, U.S. ...) and our beverage kegs range from 5L to 100L. In case you have special requirements, our technical department will work on your request to provide you with a customised container solution in stainless steel.

THE BEST QUALITY SYSTEM

Thanks to an optimized manufacturing process we can verify the quality from the pre-production stage up to the final inspection, where our pioneering leak detection unit can fully check the complete unit (keg including the valve).

THE MOST COMPLETE RANGE OF PREMIUM QUALITY STAINLESS STEEL KEGS

Constructed of strong and durable stainless steel, our sterling-quality kegs readily serve as first-rate storage containers for safeguarding the quality of your beverages.

They are easy to clean, maintain and are built to last. Thanks to customization options, our kegs represent a solution where you would be proud to have your brand on.

KEY FEATURES

HAND HOLES: Ergonomic design. The hand holes are ideally formed, providing a good grip.

CENTRAL WELD: TIG welding with state-of-the-art technology and electronic control systems.

IDENTIFICATION: Wide range of markings for complex logistics and modern marketing.

ROLLING RINGS: Make the major contribution to the strength of the keg while improving handling.

SAFETY DISC: Safety guarantee in case of overpressure. The keg will open in a controlled manner avoiding accidents.

VOLUME

5 - 100L

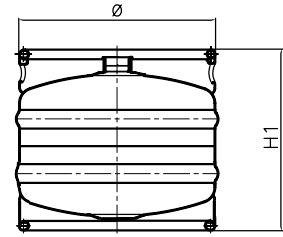


PREMIUM STAINLESS STEEL

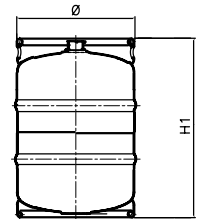
Our kegs feature top-grade austenitic stainless steel. This material ensures a great protection against corrosion and guarantees years of services even in heavy duty work.

STAINLESS STEEL SAVES CO₂, 100% RECYCLABLE

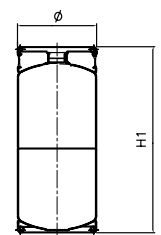
The use of stainless steel as the base of all our products reduces the carbon footprint and protects the environment, as stainless steel recycles forever.

EURO / DIN KEG.

TYPE	VOLUME liters	DIAMETER Ømm	WEIGHT kg	H1 mm	STACKABLE
EURO	50	395	11.8	532	Optional
	30	395	9.5	365	Optional
	25	395	8.9	328	Optional
	20	395	8.6	287	Optional
DIN	50	363	11.1	600	Optional
	30	363	8.9	400	Optional
	20	363	7.3	308	Optional

U.S. KEG.

TYPE	VOLUME gal	DIAMETER Ømm	WEIGHT lb	H1 mm	STACKABLE
1/2 Barrel	15.5	395	29.75	590.5	Optional
1/4 Barrel	7.75	395	23.6	349	Optional
1/4 Barrel Slim	7.75	278	17.6	590.5	Optional
1/6 Barrel	5.16	229	12.55	590.5	-

SLIM KEG.

TYPE	VOLUME liters	DIAMETER Ømm	WEIGHT kg	H1 mm	STACKABLE
Slim 309	25	309	7.7	475	Optional
	15	309	5	318	Optional
Slim 300	30.3	300	8	553	Optional
Slim 278	30	278	8.15	595	Optional
	20	278	5.65	450	Optional
	15	278	5	365	Optional
Slim 250	15	250	4.4	408	Optional
	10	250	3.5	307	Optional
Slim 237	20	237	5.4	568	-
	15	237	4.5	455	-
	10	237	3.8	345	-

RSR - RUBBER STEEL RUBBER KEGS

A GREAT SOLUTION FOR HANDLING UP TO 20L IN LOW-NOISE ATMOSPHERES



QUIET PERFORMANCE. DEEP DRAWN KEG WITH TOP AND BOTTOM CHIMES MADE OF RUBBER.

More recent requirements call for lightweight kegs, lower capacities, less noisy and more friendly handling kegs.

These kegs range from 10 to 20 litres and are made of deepdrawn with perfectly smooth internal surfaces. The rubber ends are hot-vulcanised under very high pressure to the metal shell, ensuring a perfect adherence.

They are suitable for all kind of beverages including our special version made for the soft drink industry.

KEY FEATURES

ERGONOMIC HANDLING

LOW NOISE

PROTECTIVE DELICATE SURFACES

These kegs feature top and bottom chime vulcanized into the main body, which is made of premium stainless steel.

If you are looking for a Rubber Ended Keg, also known in the industry as RSR Keg (Rubber-Steel-Rubber), our expertise in manufacturing will guarantee a long-lasting, quality product.

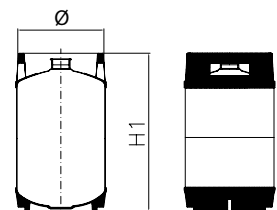
VOLUME

10 - 20L



APPLICATIONS

- BEER
- WINE
- SOFT DRINKS
- CIDER
- JUICE
- WATER



TYPE	VOLUME liters	DIAMETER Ømm	STACKABLE
RSR 237	10 - 20	237	-
RSR 258	10 - 20	258	Optional
RSR 264	10 - 20	264	Optional
Soft Drink 216/237	10 - 20	219 - 237	-

STAINLESS STEEL CASKS

A SAFE CHOICE FOR YOUR REAL ALE BEER



ENGINEERED WITH PRECISION. FULL FLAVOR GUARANTEED.

Modern casks are made of stainless steel. Brewers can fill our casks with unpasteurized, fresh beer along with a measured amount of hops for flavour and aroma, and then seal them to start the secondary process. Since there is still yeast present, the sugars within the beer start a secondary fermentation that helps carbonate the beer within the cask.

KEY FEATURES

EASY TO OPERATE WITH A REGULAR HAND PUMP

VOLUMES FROM 4.5 TO 9 GALLON

30 YEARS LIFESPAN

The original draught beer tap was nothing more than a simple device to control the flow of beer from a cask leaving the residual hops inside. Our casks allow brewers to develop traditional beer recipes naturally carbonated in the cask.

Our casks enable brewers to make these unique beers and develop the wonderful tastes and aromas which clearly differentiate these ales from processed beers.

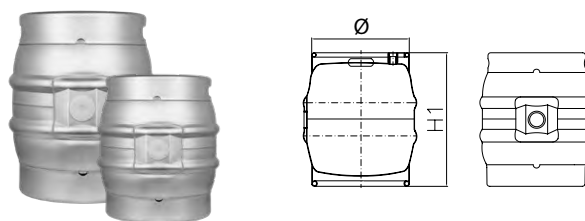
VOLUME

4.5 - 9 Gal. (20.7 - 41.4L)



APPLICATIONS

- ALE BEER



TYPE	VOLUME	DIAMETER Ømm	H1 mm	THICKNESS mm
9G	9 Gal (41.4L)	385	484	1.7 / 1.5
4.5G	4.5 Gal (20.7L)	309	388	1.5

PRESSURE VESSELS

FULLY CUSTOMIZABLE MULTIPURPOSE CONTAINER WITH HAND-HOLE COVER



DISPENSING PRESSURIZED FLUIDS WAS NEVER SO EASY TO CLEAN.

THIELMANN Pressure Vessels represent a perfect solution for storing any type of beverages or liquids that are dispensed under pressure. The ease of cleaning and the wide range of connections and possibilities can make them fit in several processes within the brewing and beverage industry. This type of container is also known in the industry as Cornelius Kegs and are very much used among craft brewers worldwide.

KEY FEATURES

HAND HOLE COVER The oval hand hole cover allows easy to clean and manual filling, making this container an excellent choice for home brewers in the initial stages.

SAFETY GUARANTEED Safety cover prevents opening the container when pressurized.

CE CERTIFICATION AVAILABLE

FULLY CUSTOMIZABLE CONTAINER

LIGHT WEIGHT

VOLUME

2.4 - 225L



APPLICATIONS

- BEER
- WATER
- SOFT DRINKS
- CLEANING



DIAMETER Ø mm	VOLUME liters	HEIGHT mm	Hand-hole cover	CONNECTIONS						WORKING PRESSURE bar	
				G 3/4"	G 2"	SSV	Tailor made				
							G 1/4"	G 1/2"	G 3/4"	G 2"	
216	2.4 - 19.5	248 - 626	●			○	○	○	○	○	6
237	10.0 - 25.0	329 - 676	●			○	○	○	○	○	10
278	10.0 - 30.0	277 - 613		●	●	○	○	○			6
363	30.0 - 100.0	404 - 1094	●			○	○	○	○	○	10
395	30.0 - 100.0	365 - 946		●	●	○	○	○			2 - 6
550	100.0 - 225.0	625 - 1162		●	●	○	○	○			1 - 2

ASEPTIC IBC CONTAINERS

A REAL MULTI-PURPOSE CONTAINER FOR BREWERIES



ASEPTIC CONTAINER FOR FLUIDS AND HIGHLY VISCOUS PRODUCTS..

THIELMANN Aseptic Container features ideal cleaning geometry, residue-free emptying, and is non-permeable. With a great variety in sizes and non-wearing construction which allows continual re-use, the aseptic container ASC made of stainless steel represents a real multipurpose solution for beverage producers.

KEY FEATURES

- COMPLETE EMPTYING GUARANTEED**
- EXTREMELY EASY TO USE AND CLEAN**
- SEVERAL OUTLET VERSIONS**
- STACKABLE UP TO 3 HIGH**
- WEIGHT OPTIMIZED FRAME**
- VACUUM RESISTANT**
- DESIGNED FOR ASEPTIC / STERILE USE**
- VACUUM RESISTANT (-0.15 BAR UNTIL -0.5 BAR)**
- PRESSURE RESISTANT UP TO 3 BAR**

VOLUME

225L - 2500L



APPLICATIONS

- BEVERAGES
- FOOD INGREDIENTS

TYPE	VOLUME liters	DIAMETER Ømm	HEIGHT mm	WEIGHT kg
ASC 500	500	1000	1170	95
ASC 800	800	1000	1640	110
ASC 1000	1000	1000	1810	120





MAINTENANCE AND REPAIRS



Kege can be damaged as they are used on a regular daily basis. We offer a full repair and management program that ensures your fleet is in optimal condition and increases the reliability and durability of your initial investment.

NECK REPAIR

Welding
Retrofitting

CHIME STRAIGHTENING

Agreed deformation standards
Welding as required

PRESSURE TEST

Extractor tests
Decant containers
Internal / External inspection

EXTRACTOR MAINTENANCE

Approved extractor refurbishment
Extractor replacement if needed

RE-BRANDING

Replace labelling or colour bands

CLEANING

Full internal thorough cleaning
Beer stone removal



TRACKING AND IDENTIFICATION

WIDE RANGE OF MARKINGS FOR COMPLEX LOGISTICS SYSTEMS AND MODERN MARKETING. CONTROL AND MANAGE YOUR FLEET WITH AN EASY, EFFICIENT AND COST EFFECTIVE SYSTEM



Our containers can be provided with a variety of logos, symbols, production and filling data, from encoded information to electronic codification.

IDENTIFICATION POSSIBILITIES

- Embossing
- Paintbanding
- Screen printing
- Barcodes
- Matrix Codes

Apart from that, our containers can be fitted with several tracking solutions, from bar codes, transponders or full RFID integrated systems for bulk scanning capabilities.

TRACKING SOLUTIONS WILL ALLOW YOU TO

- Optimize the investment in your container fleet
- Know your asset population inside/out
- Compare container availability against forecast
- Identify asset losses and loss rate trends



CONTACT US. WE ARE RIGHT HERE IN THE U.S.

sales@thielmann.com

THIELMANN US LLC.

12121 Wickchester Lane, Suite 325

Houston - TX 77079

United States

Tel. +1 281 741 8547

OTHER LOCATIONS

THIELMANN UCON GmbH

Gustav-Rivinius Platz 2

77756 - Hausach

Germany

Tel. +49 7831 77269

THIELMANN PORTINOX SPAIN S.A.

Ctra Pulianas, km 6

18197 - Pulianas - Granada

Spain

Tel. +34 958 406000

THIELMANN WEW GmbH

Ringstrasse 65a

57586 - Weitefeld

Germany

Tel. +49 2743 9222-0

THIELMANN Mexico S.A. de C.V.

Eje 124 No. 115-7 Zona Industrial

78395 - San Luis Potosi

Mexico

Tel. +52 444 4565300

THIELMANN UK Ltd.

Unit 1 Churchwell Vale - Shaw Cross

Business Park - WF12 7RD - Dewsbury

United Kingdom

Tel. +44 1924 885010

THIELMANN CONTEK Services GmbH

Harzstrasse 12

99755 - Ellrich

Germany

Tel. +49 3633 22890

THIELMANN AG

Park Tower 12th Floor, Gubelstrasse 24

6300 - Zug

Switzerland